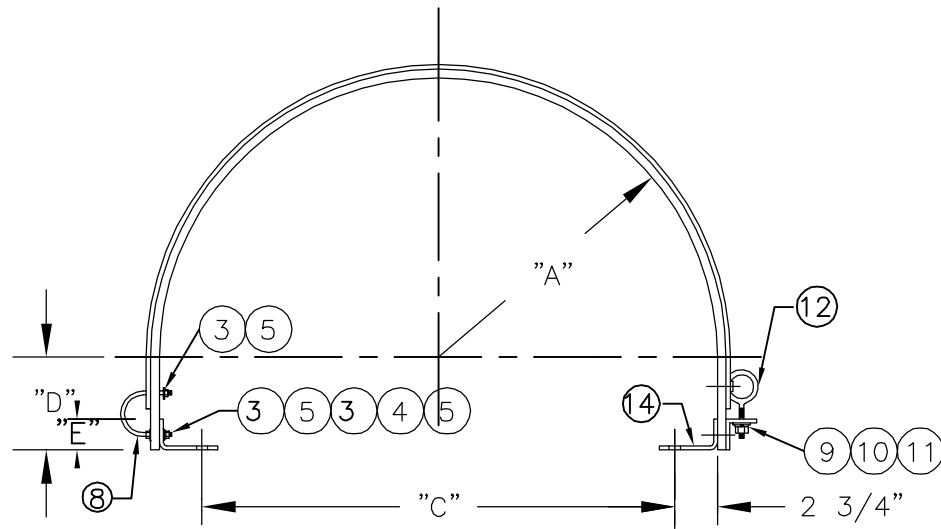


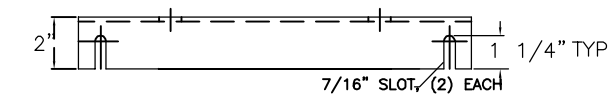
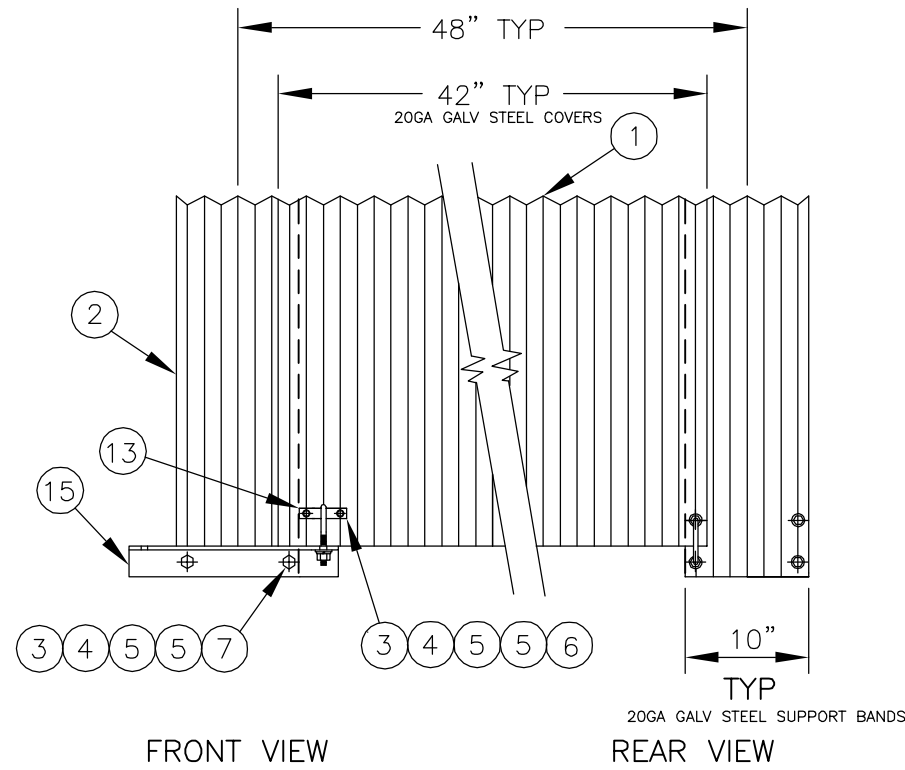
CHCO- SERIES CORRUGATED QUICK OPENING COVERS

MATERIAL: (All Dimensions are standard. Other options are available upon request)

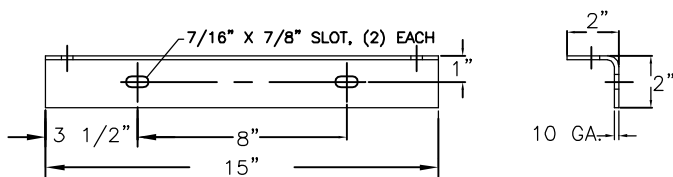
STANDARD COVERS AND BANDS ARE GALVANIZED STEEL.
ALUMINUM, STAINLESS STEEL AND PAINTED ARE AVAILABLE.
CORRUGATIONS 1/2" X 2.67"



HARDWARE TO MOUNT CLIP ANGLES TO STRINGER PROVIDED BY OTHERS.

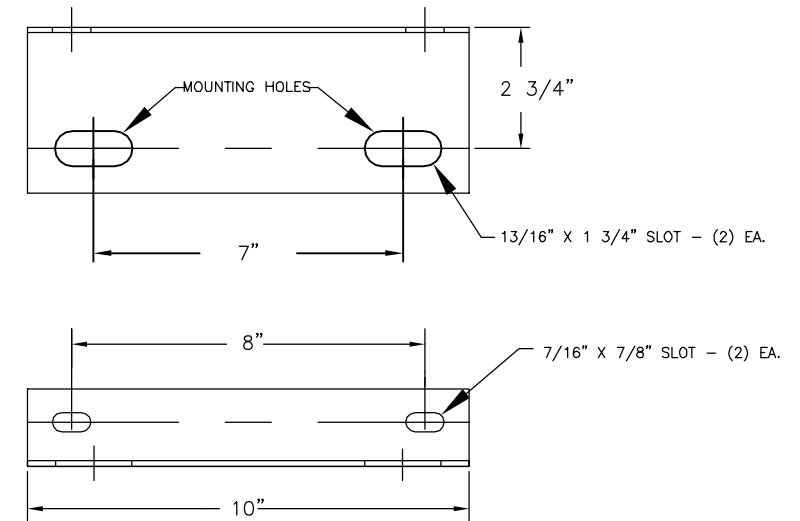


LOCK ANGLE FOR 10" CORRUGATED BAND



| PARTS LIST PER ASSEMBLY | | | | |
|-------------------------|--------------|--------------------------------------|-----|-------|
| ITEM | PART NUMBER | DESCRIPTION | QTY | TOTAL |
| 1 | CHCO_GC42 | Cover, quick-opening, corr, galv stl | P/C | - |
| 2 | CHCO_GB10 | Support band, corr, galv g-90 | - | P/B |
| 3 | 516HN-ZN | Nut, hex, 5/16-18, zinc plt | 10 | 2 |
| 4 | 516LW-ZN | Lock washer, 5/16", zinc plt | 6 | 2 |
| 5 | 516FW-ZN | Washer, flat, 5/16", zinc | 14 | 4 |
| 6 | 516-1HB-ZN | Bolt, hex head, 5/16"-18 x 1" | 4 | 0 |
| 7 | 516-112HB-ZN | Bolt, hex head, 5/16"-18 x 1 1/2" | 0 | 2 |
| 8 | 516-214UB-ZN | U-bolt, 5/16 x 18, 2 1/4" zinc | 2 | 0 |
| 9 | 38HN-ZN | Nut, hex, 3/8-16, zinc plated | 2 | 0 |
| 10 | 38LW-ZN | Lock washer 3/8" zinc plated | 2 | 0 |
| 11 | 38FW-ZN | Flat washer, 3/8" zinc plated | 2 | 0 |
| 12 | 38-5EB-ZN | Eyebolt, 3/8"-16" x 5" zinc | 2 | 0 |
| 13 | FLP-ZN | Latch plat, flat, 5/8"x3 9/16" zinc | 2 | 0 |
| 14 | CA7-G | Clip angle, 7" mtg hole, 8" upright | 0 | 2 |
| 15 | LA-G | Locking angle, 15" long | 0 | 1 |

Note: All standard hardware is grade 2, zinc plated. Hot dipped galvanized, stainless steel or painted available upon request.



CLIP ANGLE FOR CORRUGATED BAND - SECTION "A-A"

SPECIFICATIONS

| ASSEMBLY NO. | BELT WIDTH | "A" | "C" | **"D" | "E" |
|--------------|------------|---------|-----|-------|--------------|
| CHCO18GA40 | 18" | 16 1/4" | 27" | 6" | "D" - 2 1/2" |
| CHCO20GA40 | 20" | 17 1/4" | 29" | 6" | "D" - 2 1/2" |
| CHCO24GA40 | 24" | 19 1/4" | 33" | 6" | "D" - 2 1/2" |
| CHCO30GA40 | 30" | 22 1/4" | 39" | 6" | "D" - 2 1/2" |
| CHCO36GA40 | 36" | 25 1/4" | 45" | 6" | "D" - 2 1/2" |
| CHCO42GA40 | 42" | 28 1/4" | 51" | 6" | "D" - 2 1/2" |
| CHCO48GA40 | 48" | 31 1/4" | 57" | 6" | "D" - 2 1/2" |
| CHCO54GA40 | 54" | 34 1/4" | 63" | 6" | "D" - 2 1/2" |
| CHCO60GA40 | 60" | 37 1/4" | 69" | 6" | "D" - 2 1/2" |
| CHCO72GA40 | 72" | 43 1/4" | 81" | 6" | "D" - 2 1/2" |
| CHCO84GA40 | 84" | 49 1/4" | 93" | 6" | "D" - 2 1/2" |

INSTALLATION PROCEDURE

1. Bolt clip angles [14] to conveyor with 5/8" fasteners, which are normally **not provided** by RPS Engineering.
2. Fasten support band [2] and locking angle [15] to opening side of cover with 5/16" hardware [3, 4, 5, 7].
3. Attach flat latch plates [13] and eyebolts [12] to cover [1] with 5/16" hardware [3-6].
4. Position cover over support bands, and connect cover to back side of bands with 5/16" U-bolts [8].
5. Secure front side of cover with 3/8" eyebolts.
6. Be sure bands are perpendicular to conveyor support and that cover fits in the corrugations. Tighten all fasteners.

This print or drawing is the property of R.P.S. Engineering, Inc. and is confidential or proprietary information. It is not to be copied, reproduced, used or disclosed, in whole or part, unless in reference to contracts or proposals of this company. Nothing disclosed herein which is not publicly available may be used without written permission.



Jamieson Equipment Company
5314 Palmero Court | Buford, GA 30518
800.875.0280 | sales@jamiesonequipment.com
www.jamiesonequipment.com